



# BEVERAGE-AIR

Project: _____	AIA#
Item: _____	
Location: _____	SIS#
Approved: _____	

**MT49™ MERCHANDISER: SLIDING DOOR MODEL**

**MARKETEER™ MERCHANDISERS**  
**MT49 White Sliding Door Model**  
**Hydrocarbon Series**

**MODEL:**  
**MT49-1-SDW**



**5 Year Parts/Labor Warranty Available**  
**7 Year Compressor Warranty**

**CABINET CONSTRUCTION**

- Standard cabinet exterior finish is heavy duty steel with a white baked on durable coating
- Heavy duty interior construction includes white coated steel
- Mechanical temperature control
- Modern one piece grille
- Double pane lowE argon filled glass door feature outside pane that is tempered for added safety
- Self-closing sliding glass doors, black door frames regardless of exterior color
- Pocket door handles
- LED lighting
- Ten (10) epoxy coated shelves
- Leveling feet

**OPTIONS & ACCESSORIES**

- 3 Year parts/labor standard, additional 2 year warranty available
- Extra shelves and clips
- 3" Casters
- Visislide shelving kit

**REFRIGERATION SYSTEM**

- Uses environmentally friendly, energy efficient R290 refrigerant, and meets all regulatory requirements for CARB, SNAP, DOE & more
- Condenser is designed to be low maintenance, and energy efficient
- Automatic, non-electric defrost
- Epoxy coated evaporator coil



Please verify qualifying units by visiting:  
[www.energystar.gov/cfs](http://www.energystar.gov/cfs)

3779 Champion Blvd., Winston-Salem, NC 27105  
 1-888-845-9800 Fax: 1-336-245-6453  
 Beverage-Air.com Sales@bevair.com



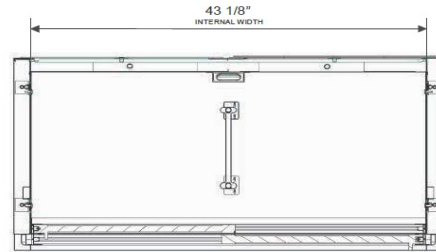
# BEVERAGE-AIR

## Glass Sliding Door Model Model: MT49-1-SDW

MODEL	MT49-1-SDW
<b>EXTERNAL DIMENSIONAL DATA</b>	
Width Overall	47 1/8"
Depth Overall	29 1/4"
Height Overall	78 3/8"
Number of Doors	2
<b>INTERNAL DIMENSIONAL DATA</b>	
NET Capacity (cubic ft.)	39.03
Capacity 20 oz	490
Internal Width Overall (in)	43 1/8"
Internal Depth Overall (in)	22 3/8"
Internal Height Overall (in)	60 1/2"
Internal Height Useable (in)	54 13/16"
Number of Shelves	10
<b>ELECTRICAL DATA</b>	
Full Load Amperes 115/60/1	8.3
<b>REFRIGERATION DATA</b>	
Horsepower	1/2
Energy Consumption	5.300 kWh/day
Capacity (BTU/Hr)	3615
Heat Rejection (BTU/Hr)	5422.5
Charge (lbs/grams)	0.187/85
<b>WEIGHT DATA</b>	
Gross Weight - Crated	462 lbs
Height - Crated	86"
Width - Crated	51"
Depth - Crated	34"

### Model Views

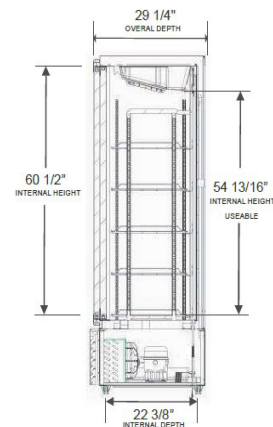
Clearances: 4" Top, Rear, Left and Right Side



### PLAN VIEW



### ELEVATION VIEW



### SIDE VIEW

### ELECTRICAL CONNECTION



115/60/1  
NEMA 5-15P

Unit pre-wired at factory and include 8' long cord and plug set.

